

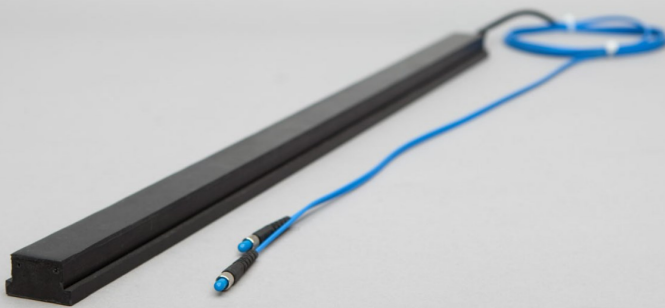
ROAD TRAFFIC SENSORS THE PERFECT COMBINATION FOR BEST RESULTS



SL PUR SENSOR

The SL PUR sensor is designed for permanent installation in concrete or asphalt roads.

Its special T-shape ensures a fast and long-term installation. The SL PUR sensor detects vehicles in road traffic for applications like axle counting, speed measurement, headway measurement and vehicle classification.

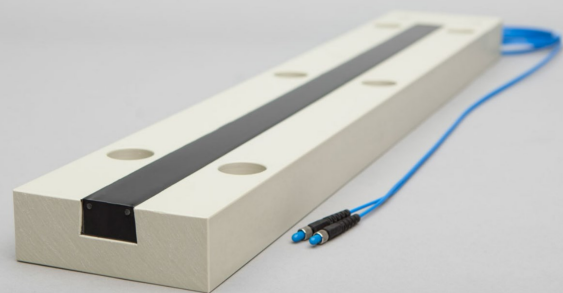


SL EZ SENSOR

The SL EZ sensor is designed for permanent installation in concrete roads.

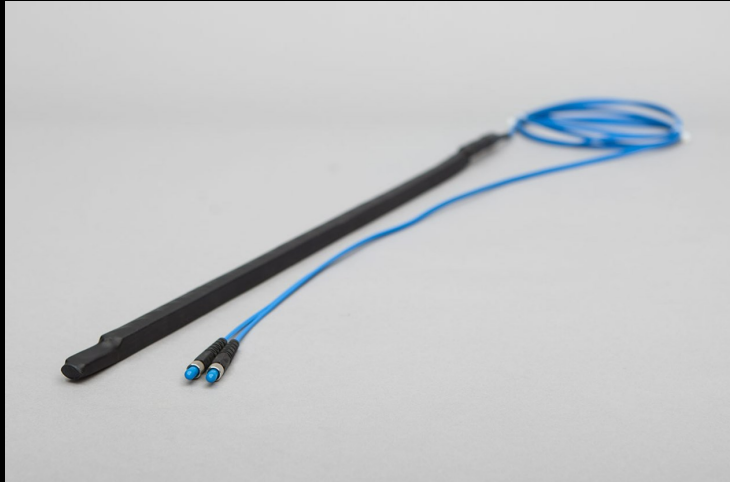
Mounted in a high-density polymer frame, the sensor can be quickly and easily replaced without the need for additional road work and fill material.

It is especially made for applications such as Multi Lane Free Flow (MLFF).



SENSORLINE.DE

Over 70,000 systems have been successfully installed in about 50 countries worldwide since 1996. The progressive technological developments as well as the high quality and reliability of the products have made Sensor Line a global market leader in the field of fiber optic traffic sensors.

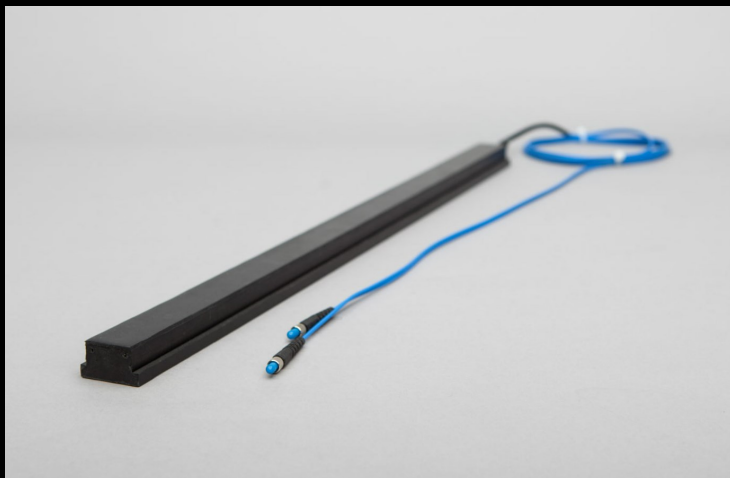
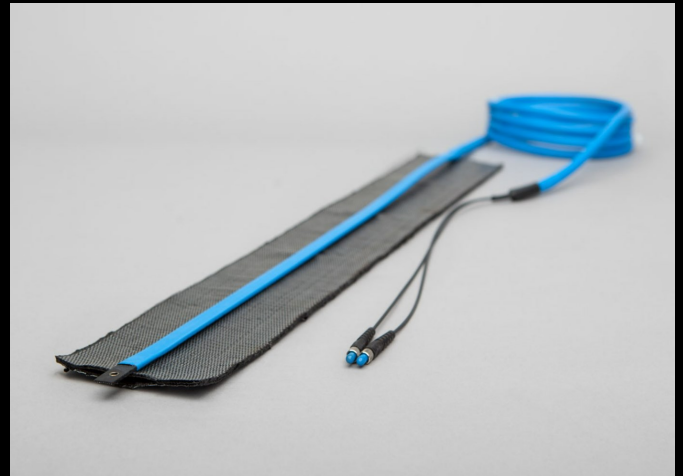


SL SPZ SENSOR

The SL SPZ sensor detects cars, trucks as well as motorbikes in road traffic for axle counting, speed measurement, headway measurement and vehicle classification. The SL SPZ sensor is a basic fiber optic traffic sensor designed for permanent installation in concrete or asphalt roads. The SL SPZ sensor is installed with our PU-based filler material which provides a perfect bonding to roads.

SL SMS SENSOR

The surface mounted SL SMS sensor is a flat fiber optic traffic sensor designed for temporary installations in a road pocket tape (e.g. self-adhesive reinforced mastic membrane pocket tape) which is sticking on the pavement. This type of sensor allows an easy and fast installation on the road.



SL PUR-BS SENSOR

The SL PUR-BS sensor is a modified SL PUR sensor for bicycle detection and cyclist counting that has a softer top layer of polyurethane-based resin and a fiber optic core with highest sensitivity. The SL PUR-BS sensor is designed for permanent installation in concrete or asphalt roads. Its special T-shape ensures a fast and long-term installation.