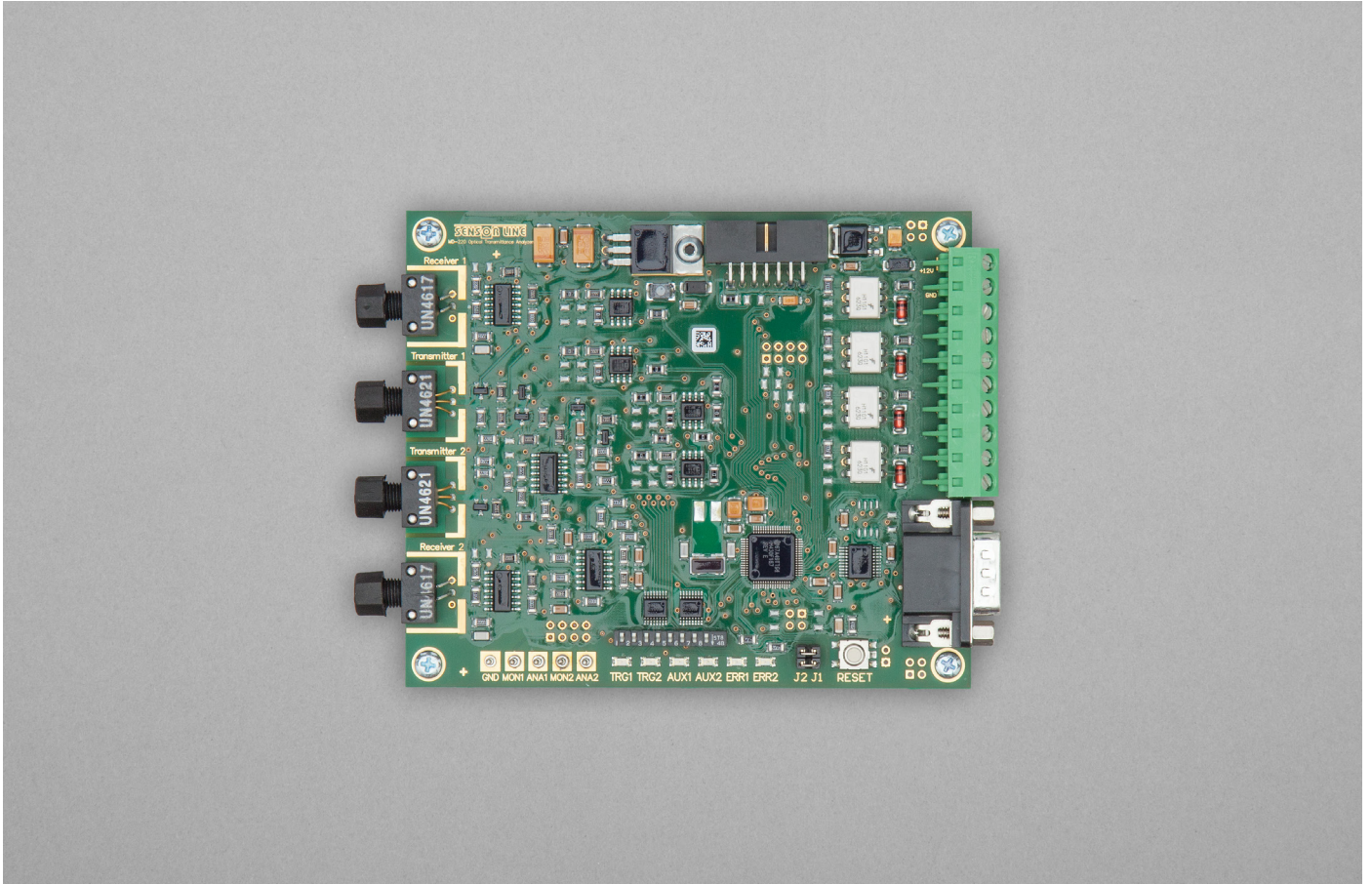


SL MD-220

STATIC ELECTRONIC INTERFACE WITH 2 CHANNELS



PRODUCT DESCRIPTION

The SL MD-220 is a two-channel static opto-electronic interface for Sensor Line fiber optic road traffic sensors. Its purpose is to feed light into two sensors at a time, monitor the amount of light transmitted by them and detect small changes caused by pressure applied to the sensors. The interface can store the amount of light transmitted without any pressure applied for a virtually infinite time; the pressure can therefore be detected as long as it is on the sensors. All of our fiber optic road traffic sensors (like PUR, EZ, SPZ, SMS) can be directly connected to the SL MD-220.

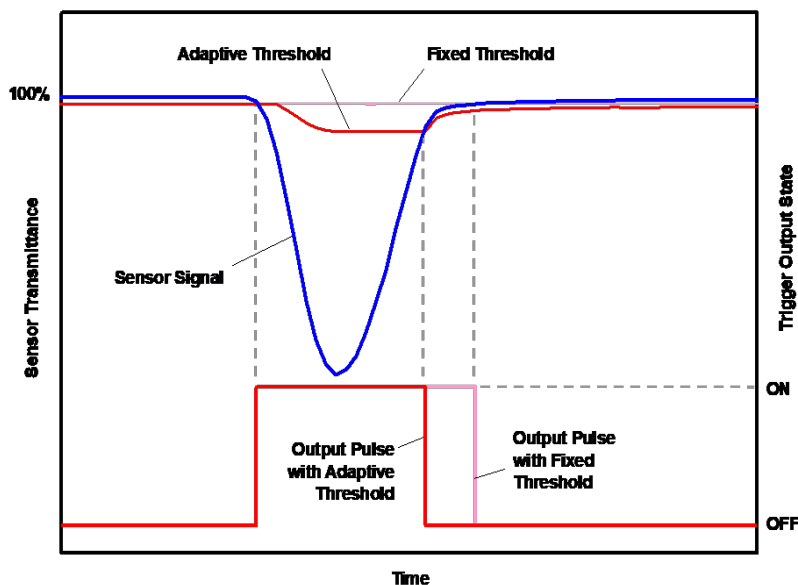
SL MD-220

STATIC ELECTRONIC INTERFACE WITH 2 CHANNELS

CHARACTERISTICS

- Suitable for 2-channel fiber optic load sensor.
- 16-bit-mixed-signal processor.
- External control of trigger threshold and pulse extension (switch).
- Digital and analog ports.
- RS-232 or RS-485 communication interface.
- Stack of two boards is possible.
- Floating opto-coupler outputs.
- Sensor failure indication.
- Reverse power protection.
- Outputs short circuit protection.
- The SL MD-220 interface will be typically located in a roadside cabinet.
- A SL Fiber Optic Traffic Sensor will be connected by means of its fiber optic feeder cable with SMA plugs readily attached to it. The screw clip connector bar is used for power supply and to retrieve the output signals.

ADAPTIVE THRESHOLD



Adaptive threshold processing can be switched on and off. The ratio of signal amplitude to which the trigger threshold adapts can be defined to values of 50%, 25%, 12.5% and 6.25%.

SL MD-220

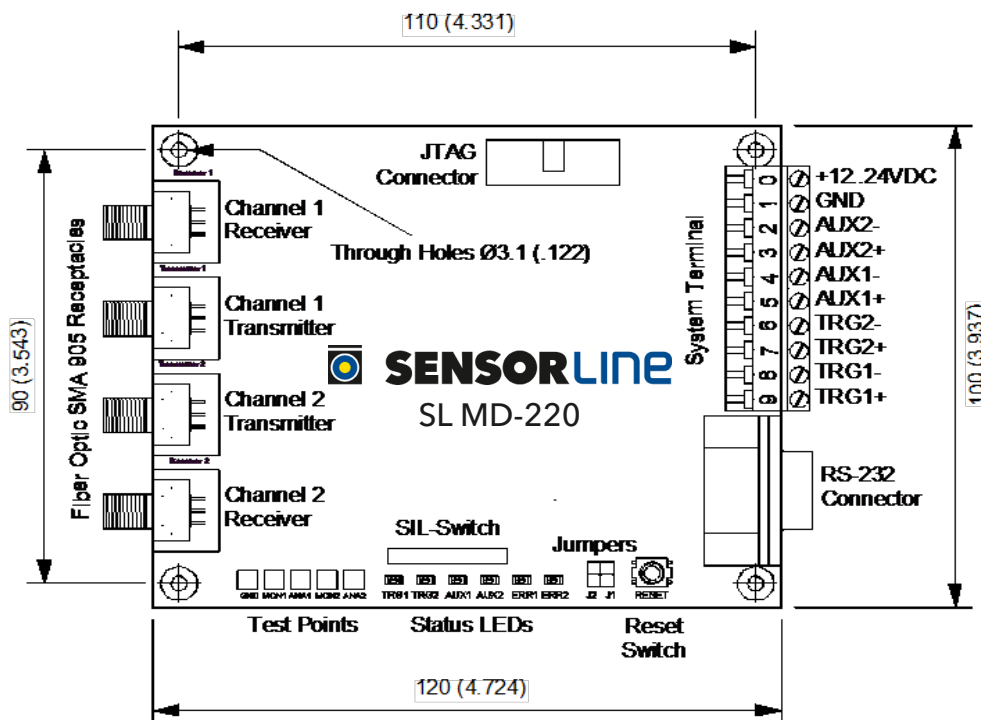
TECHNICAL DATA

SPECIFICATIONS

Number of independent channels	2
Size	100 x 110 x 19 mm
Connection	Screw clip, 10 pins
Relative humidity	80 % at 25 °C
Operating / storage temperature	-40 °C to 85 °C
Supply current	< 140 mA
Supply voltage	+ 12 V to + 24 VDC
Analog output	0 - 10
Trigger threshold (selectable by jumper on board)	0,2 %, 0,4 %, 0,8 %, 1,6 % change of light transmittance
Opto-coupler output max	60V / 25 mA
LED risk group	RG 0 (safe)
Warranty	2 years

© Sensor Line GmbH

SKETCHES



Maximum Height 19 (.748) - Dimensions in mm (in)